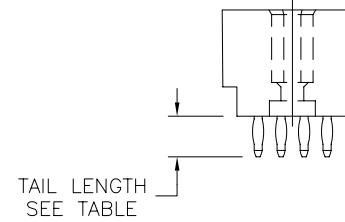
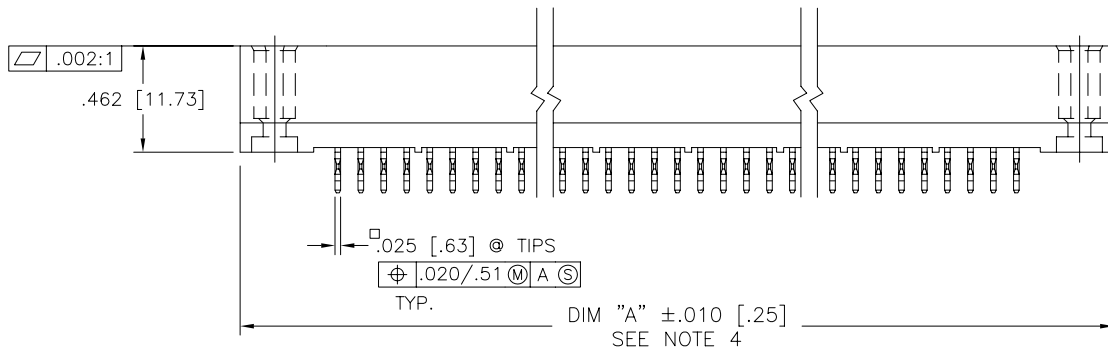
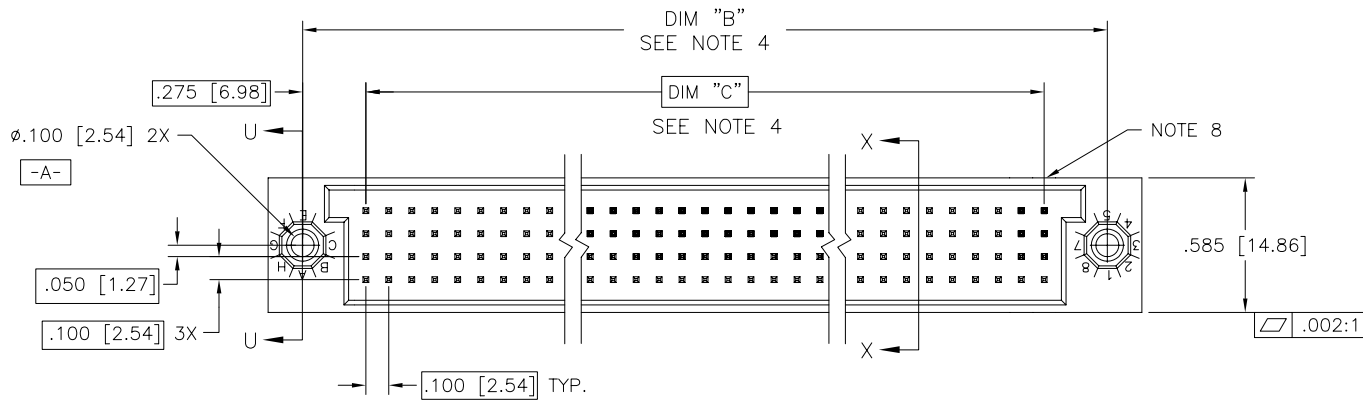


PRODUCT NUMBER  
SEE TABLE AND NOTES 1 & 2 ONSHEET 3

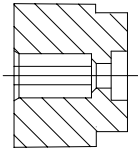


FCI  
FCIconnect.com

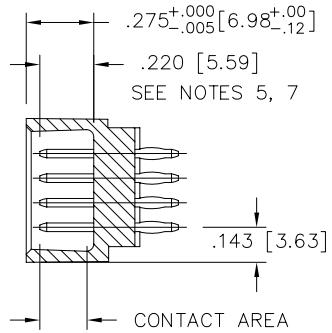
Copyright FCI

mat'l. code SEE NOTE 3		surface ISO 1302 ✓		tolerance ISO 406 ISO 1101		projection INCH/MM		product family HPC	
ltr	ecn no	dr	date	tolerances unless otherwise specified		scale 1:1		title 4 ROW VERTICAL HEADER W/PRESS-FIT PINS, 0 G.P.	
J	v81411	DLW	8/20/98	angles	linear			dwg no	
K	v82253	HTB	12/29/98					sheet 1 of 9 size	
L	v00271	JWS	1/31/00	0°±2'				50009 A3	
M	v05-0612	DCH	6/29/05	dr	D.HORCHLER	6/29/05		type Product Customer Drawing	
N	v05-0999	DAI	10/29/05	enrg	D.HORCHLER	6/29/05			
P	M06-0283	MHT	7/27/06	chr	T.BREWBAKER	7/5/05			
R	M06-0447	AGS	11/07/06	appd	D.HORCHLER	7/5/05			
sheet	revision	R	R	R	R	R	R	R	R
index	sheet	1	2	3	4	5	6	7	8

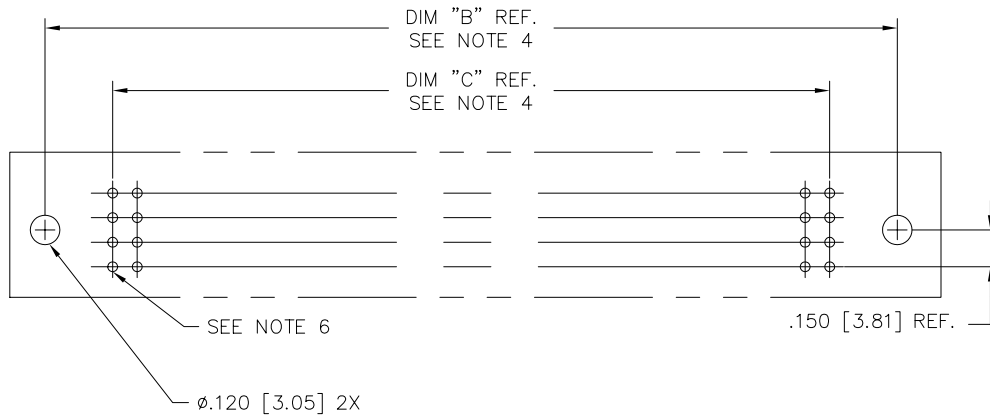
PRODUCT NO.  
SEE TABLE



SECTION U-U



SECTION X-X



RECOMMENDED PCB LAYOUT  
(ALL HOLES LOCATED ON .100/2.54 GRID  
UNLESS OTHERWISE SPECIFIED)

mat'l. code SEE NOTE 3		surface ISO 1302 ✓	tolerance ISO 406 ISO 1101	projection 	product family HPC
ltr	ecn no	dr	date	tolerances unless otherwise specified	title
R				angles linear .XX±.01/.3 .XXX±.005/.13 0°±2' .XXX±.0020/.051	INCH/MM 4 ROW VERTICAL HEADER W/PRESS-FIT PINS, 0 G.P.
				dr D.HORCHLER 6/29/05 enr D.HORCHLER 6/29/05 chr T.BREWBAKER 7/5/05 app D.HORCHLER 7/5/05	scale 1:1 FCJ dwg no 50009 sheet 2 of 9 size A3
sheet index	revision sheet				type Product Customer Drawing

PRODUCT NO. NOTE 11	NUMBER OF POSITIONS	TAIL LENGTH ±.015/.38	CONTACT PLATING
50009-1YAYA	YYY	.177/4.50	30μ"/.76μ Au
50009-1YYC	YYY	.533/13.54	30μ"/.76μ Au
50009-1YYD	YYY	.733/18.62	30μ"/.76μ Au
50009-1YYG	YYY	.250/6.35	30μ"/.76μ Au
50009-1YYL	YYY	.188/4.78	30μ"/.76μ Au
50009-1YYP	YYY	.470/11.94	30μ"/.76μ Au
50009-1YYR	YYY	.250/6.35	30μ"/.76μ Au
50009-3YAYA	YYY	.177/4.50	50μ"/1.27μ Au
50009-3YYC	YYY	.533/13.54	50μ"/1.27μ Au
50009-3YYD	YYY	.733/18.62	50μ"/1.27μ Au
50009-3YYG	YYY	.250/6.35	50μ"/1.27μ Au
50009-3YYL	YYY	.188/4.78	50μ"/1.27μ Au
50009-3YYP	YYY	.470/11.94	50μ"/1.27μ Au
50009-3YYR	YYY	.250/6.35	50μ"/1.27μ Au
50009-5YAYA	YYY	.177/4.50	30μ"/.76μ GXT
50009-5YYC	YYY	.533/13.54	30μ"/.76μ GXT
50009-5YYD	YYY	.733/18.62	30μ"/.76μ GXT
50009-5YYG	YYY	.250/6.35	30μ"/.76μ GXT
50009-5YYL	YYY	.188/4.78	30μ"/.76μ GXT
50009-5YYP	YYY	.470/11.94	30μ"/.76μ GXT
50009-5YYR	YYY	.250/6.35	30μ"/.76μ GXT
50009-XX005	100	.177/4.50	50μ"/1.27μ Au
50009-XX034	300	.533/13.54	30μ"/.76μ GXT
50009-XX067	100	.177/4.50	50μ"/1.27μ Au
50009-XX076	200	.177/4.50	30μ"/.76μ Au
50009-XX124	140	.603/15.32	50μ"/1.27μ Au
50009-XX187	400	SEE SHT 9	30μ"/.76μ Au

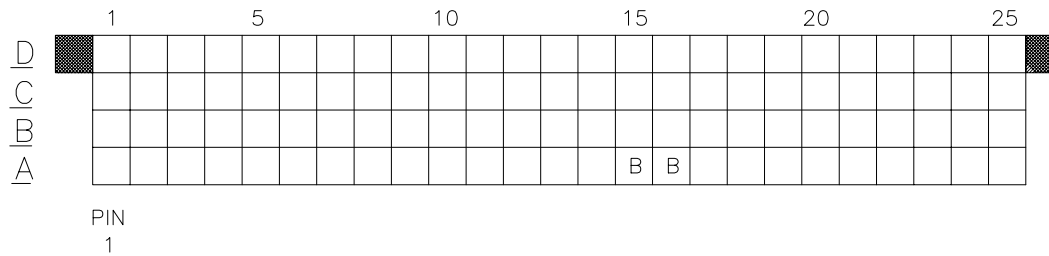
SHT 4  
SHT 5  
SHT 6  
SHT 7  
SHT 8  
SHT 9

NOTES:

- ① PRODUCT NUMBERING CODE:  
50009 - X YYY Z LF  
 X — LEAD FREE OPTION  
 YYY — TAIL LENGTH, SEE TABLE  
 Z — NO. OF POSITIONS SEE NOTE 2  
 LF — PLATING IN CONTACT AREA SEE TABLE  
 BASE NUMBER
- PRODUCT NUMBERING CODE FOR  
SELECT LOAD PART NUMBERS:  
50009 - XXYYY LF  
 X — LEAD FREE OPTION  
 YYY — SEQUENCE NUMBER  
 ALWAYS 'XX'  
 BASE NUMBER
- ② THIS PRODUCT IS CONFIGURED IN SIZES OF 6 thru 100  
COLUMNS IN INCREMENTS OF ONE.  
i.e.: 6,7,8,9,.....99,100.
- ③ HOUSING MATERIAL: GLASS AND MINERAL FILLED  
HIGH TEMP. THERMOPLASTIC. FLAME RETARDANT PER  
UL94V-0. COLOR: BLACK.  
PIN MATERIAL: PHOS BRONZE
- ④ LENGTH CALCULATIONS:  
DIMENSION "A" = .100/2.54 x NO. OF COLUMNS + .75/19.1  
DIMENSION "B" = .100/2.54 x NO. OF COLUMNS + .450/11.43,  
DIMENSION "C" = .100/2.54 x NO. OF COLUMNS - .100/2.54
- ⑤ REFERENCE 50807 FOR F.M.L.B. AVAILABLE OPTIONS. SEE SHEETS 4-9.  
AND WORKSHEET.
- ⑥ φ.0453/1.151 DRILLED HOLE PLATED WITH .0003/.007 MIN.  
SnPb OVER .001/.03 to .003/.08 Cu. PLATING TO ACHIEVE  
A φ.040±.003/1.02±.08 HOLE.
- ⑦ TO ASSURE PROPER INSTALLATION: TOOLING, AS  
SPECIFIED IN INSTRUCTION MANUAL 155915-001 MUST  
BE USED. PIN MATING LENGTH WILL BE ±.002/.05  
AFTER INSTALLATION.
- ⑧ COMPANY NAME, PART NUMBER AND LOT CODE TO APPEAR ON  
THIS SURFACE PER BUS-12-108.
9. PRODUCT WITH "LF" SUFFIX MEETS EUROPEAN UNION DIRECTIVES AND  
OTHER COUNTRY REGULATIONS AS DESCRIBED IN GS-22-008.
10. THIS PRODUCT IS NOT INTENDED TO BE EXPOSED TO A MANUFACTURING  
SOLDER PROCESS. HOWEVER, THE HOUSING MATERIAL WILL WITHSTAND  
HEAT UP TO THE 260° C.
- ⑩ ADD LF SUFFIX AT THE END OF PART NUMBER FOR LEAD FREE OPTION.

mat'l. code SEE NOTE 3		surface ISO 1302 ✓	tolerance ISO 406 ISO 1101	projection ⊕	product family HPC
ltr	ecn no dr	date	tolerances unless otherwise specified		title
R			angles	linear .xx±.01/.3	4 ROW VERTICAL HEADER W/PRESS-FIT PINS, 0 G.P.
			0°±2'	.xxx±.005/.13 .xxxx±.0020/.051	
			dr	D.HORCHLER 6/29/05	scale 1:1
			enr	D.HORCHLER 6/29/05	dwg no
			chr	T.BREWBAKER 7/5/05	sheet 3 of 9
			app	D.HORCHLER 7/5/05	size 50009 A3
sheet	revision				type Product Customer Drawing
index	sheet				

PRODUCT NO.	ITEM KEY	SIGNAL DATA			
		SIZE 4 x 25	TOTAL NO. OF POSITIONS -100	NO. OF POSITIONS LOADED - 100	
		PRESS FIT STYLE			
		PLATING	QTY.	MATING LENGTH	TAIL LENGTH
50009-XX005	A	SEE SHEET 3	98	.220 / 5.59	.177 / 4.50
	B	SEE SHEET 3	2	.260 / 6.60	.177 / 4.50
50009-XX005LF	A	SEE SHEET 3	98	.220 / 5.59	.177 / 4.50
	B	SEE SHEET 3	2	.260 / 6.60	.177 / 4.50



1. ALL POSITIONS ARE LOADED WITH "A", EXCEPT AS SHOWN.
2. COLUMN 1, ROW A IS DESIGNATED AS SIGNAL PIN 1, AS VIEWED FROM THE MATING FACE.

mat'l. code SEE NOTE 3		surface ISO 1302 ✓	tolerance ISO 406 ISO 1101	projection 	product family HPC
ltr	ecn no	dr	date	tolerances unless otherwise specified	title
R				angles 0°±2'	linear .XX±.01/.3 .XXX±.005/.13 .XXXX±.0020/.051
				INCH/MM	4 ROW VERTICAL HEADER W/PRESS-FIT PINS, 0 G.P.
				scale 1:1	dwg no 50009
		dr	D.HORCHLER	6/29/05	sheet 4 of 9 size A3
		enr	D.HORCHLER	6/29/05	FCJ
		chr	T.BREWBAKER	7/5/05	
		app	D.HORCHLER	7/5/05	
sheet index	revision sheet				type Product Customer Drawing

PRODUCT NO.	ITEM KEY	SIGNAL DATA			
		SIZE 4 x 75	TOTAL NO. OF POSITIONS -300	NO. OF POSITIONS LOADED - 300	
		PLATING	QTY.	PRESS FIT STYLE	
				MATING LENGTH	TAIL LENGTH
50009-XX034	A	SEE SHEET 3	260	.180 / 4.57	.533 / 13.54
	B	SEE SHEET 3	40	.220 / 5.59	.533 / 13.54
50009-XX034LF	A	SEE SHEET 3	260	.180 / 4.57	.533 / 13.54
	B	SEE SHEET 3	40	.220 / 5.59	.533 / 13.54

	1	5	10	15	20	25	30	35	40						
D	B	B	B						B	B					B
C	B	B	B							B	B				B
B	B	B								B	B				B
A	B	B	B							B	B				B

PIN  
1

	41	45	50	55	60	65	70	75		
B								B	B	B
B								B	B	B
B								B	B	B
B								B	B	B

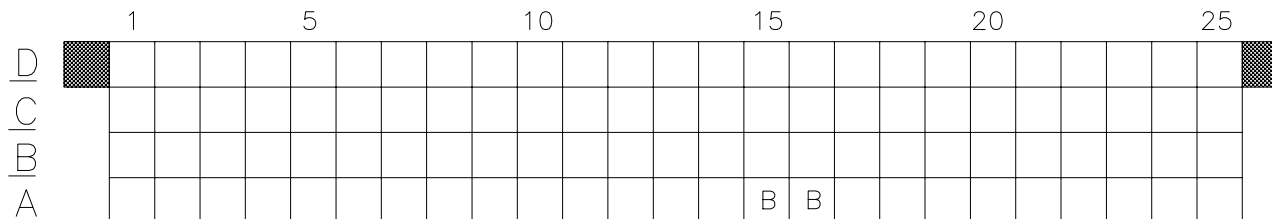
- ALL POSITIONS ARE LOADED WITH "A", EXCEPT AS SHOWN.
- COLUMN 1, ROW A IS DESIGNATED AS SIGNAL PIN 1, AS VIEWED FROM THE MATING FACE.

mat'l. code SEE NOTE 3		surface ISO 1302 ✓	tolerance ISO 406 ISO 1101	projection 	product family HPC
ltr	ecn no	dr	date	tolerances unless otherwise specified	title
R				angles linear 0°±2'	4 ROW VERTICAL HEADER W/PRESS-FIT PINS, 0 G.P.
				.XX±.01/.3 .XXX±.005/.13 .XXXX±.0020/.051	INCH/MM scale 1:1
		dr	D.HORCHLER	6/29/05	dwg no
		enr	D.HORCHLER	6/29/05	sheet 5 of 9
		chr	T.BREWBAKER	7/5/05	size A3
		app	D.HORCHLER	7/5/05	type Product Customer Drawing
sheet index	revision sheet				



Copyright FCI

PRODUCT NO.	ITEM KEY	SIGNAL DATA		
		SIZE 4 x 25	TOTAL NO. OF POSITIONS -100	NO. OF POSITIONS LOADED - 100
		CONTACT PLATING	QTY.	MATING LENGTH
50009-XX067	A	SEE SHEET 3	98	.200 / 5.08
	B	SEE SHEET 3	2	.240 / 6.10
50009-XX067LF	A	SEE SHEET 3	98	.200 / 5.08
	B	SEE SHEET 3	2	.240 / 6.10

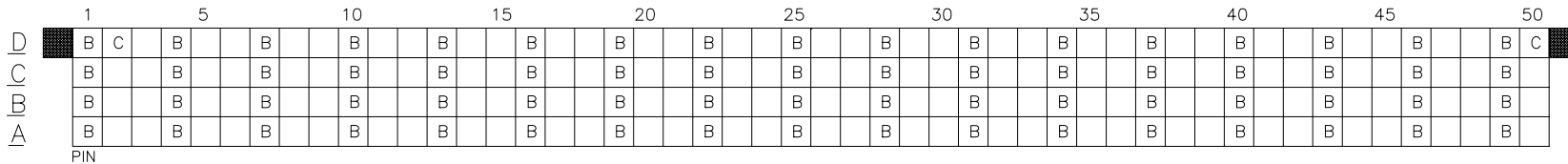


PIN  
1

1. ALL POSITIONS ARE LOADED WITH "A", EXCEPT AS SHOWN.
2. COLUMN 1, ROW A IS DESIGNATED AS SIGNAL PIN 1, AS VIEWED FROM THE MATING FACE.

mat'l. code SEE NOTE 3		surface ISO 1302 ✓	tolerance ISO 406 ISO 1101	projection 	product family HPC
ltr	ecn no	dr	date	tolerances unless otherwise specified	title
R				angles 0°±2'	4 ROW VERTICAL HEADER W/PRESS-FIT PINS, 0 G.P.
				linear .XX±.01/.3 .XXX±.005/.13 .XXXX±.0020/.051	INCH/MM scale 1:1
		dr	D.HORCHLER	6/29/05	dwg no
		enr	D.HORCHLER	6/29/05	sheet 6 of 9
		chr	T.BREWBAKER	7/5/05	size 50009 A3
		appd	D.HORCHLER	7/5/05	type Product Customer Drawing
sheet index	revision sheet				

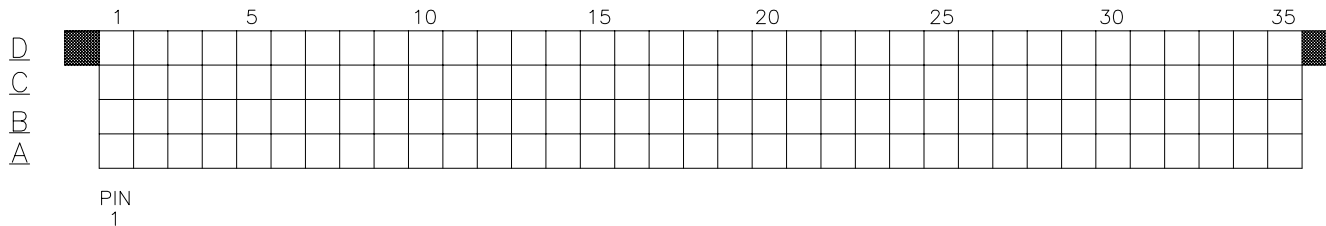
PRODUCT NO.	ITEM KEY	SIGNAL DATA				
		SIZE 4 x 50	TOTAL NO. OF POSITIONS - 200	NO. OF POSITIONS LOADED - 200		
		PIN PLATING	QTY.	MATING LENGTH	TAIL LENGTH	TOTAL PIN LENGTH
50009-XX076	A	SEE SHEET 3	130	.230 / 5.84	.177 / 4.50	.595 / 15.11
	B	SEE SHEET 3	68	.270 / 6.86	.177 / 4.50	.634 / 16.10
	C	SEE SHEET 3	2	.190 / 4.83	.177 / 4.50	.555 / 14.10
50009-XX076LF	A	SEE SHEET 3	130	.230 / 5.84	.177 / 4.50	.595 / 15.11
	B	SEE SHEET 3	68	.270 / 6.86	.177 / 4.50	.634 / 16.10
	C	SEE SHEET 3	2	.190 / 4.83	.177 / 4.50	.555 / 14.10



1. ALL POSITIONS ARE LOADED WITH "A", EXCEPT AS SHOWN.
2. COLUMN 1, ROW A IS DESIGNATED AS SIGNAL PIN 1, AS VIEWED FROM THE MATING FACE.

mat'l. code SEE NOTE 3		surface ISO 1302 ✓	tolerance ISO 406 ISO 1101	projection 	product family HPC	
ltr	ecn no	dr	date	tolerances unless otherwise specified	title	
R				angles .XX±.01/.3 linear .XXX±.005/.13 0°±2' .XXXX±.0020/.051	4 ROW VERTICAL HEADER W/PRESS-FIT PINS, 0 G.P.	
		dr	D.HORCHLER 6/29/05	scale 1:1	dwg no	
		enr	D.HORCHLER 6/29/05		sheet 7 of 9	
		chr	T.BREWBAKER 7/5/05		50009	size A3
		app	D.HORCHLER 7/5/05		type	Product Customer Drawing
sheet index	revision sheet					

PRODUCT NO.	SIGNAL DATA				
	SIZE 4 x 35	TOTAL NO. OF POSITIONS -140	NO OF POSITIONS LOADED - 140		
	ITEM KEY	PINS: PLATING:	QUANTITY	MATING LENGTH	TAIL LENGTH
50009-XX124	A	SEE SHEET 3	140	.220 / 5.59	.603 / 15.32
50009-XX124LF	A	SEE SHEET 3	140	.220 / 5.59	.603 / 15.32



1. ALL POSITIONS ARE LOADED WITH "A".
2. COLUMN 1 ROW A IS DESIGNATED AS SIGNAL PIN 1, AS VIEWED FROM THE MATING FACE.

mat'l. code SEE NOTE 3		surface ISO 1302 ✓	tolerance ISO 406 ISO 1101	projection ⊕	product family HPC
ltr	ecn no	dr	date	tolerances unless otherwise specified	title
R				angles linear 0°±2'	INCH/MM 4 ROW VERTICAL HEADER W/PRESS-FIT PINS, 0 G.P.
				.XX±.01/.3 .XXX±.005/.13 .XXXX±.0020/.051	scale 1:1
		dr	D.HORCHLER	6/29/05	dwg no
		enr	D.HORCHLER	6/29/05	sheet 8 of 9
		chr	T.BREWBAKER	7/5/05	size 50009 A3
		appd	D.HORCHLER	7/5/05	type Product Customer Drawing
sheet index	revision sheet				



